

PRESSURE TRANSMITTER

Swiss based Trafag is a leading international supplier of high quality sensors and monitoring instruments for measurement of pressure and temperature.



Applications

- Test benches
- Railways
- Machine tools
- Hydraulics
- Process technology

Features

- Smallest design
- Accuracy classes 0.1%, 0.15%, 0.3%
- Excellent temperature resistance
- Relative and absolute pressure measurement
- Optional: Dielectrical strength 500 VAC, meets EN 50155 (Railways)

Technical Data			
Measuring principle	Thin-film-on-steel	Accuracy @ 25°C typ.	± 0.3 % FS typ. ± 0.15 % FS typ. ± 0.1 % FS typ.
Measuring range	0 ... 2.5 to 0 ... 600 bar 0 ... 30 to 0 ... 7500 psi	Media temperature	-40°C ... +125°C
Output signal	4 ... 20 mA, 0 ... 5 VDC, 1 ... 6 VDC, 0 ... 10 VDC, 0.5 ... 4.5 VDC ratiometric	Ambient temperature	-40°C ... +125°C

06/2019

Data sheet H72300s

Subject to change

Ordering information/type code

				8253 . XX				XX	XX	XX	XX	XX
Measuring range ¹⁾	Pressure measurement range [bar]	Over pressure [bar]	Burst pressure [bar]	Pressure measurement range [psi]	Over pressure [psi]	Burst pressure [psi]						
	0 ... 2.5 ²⁾	5	50	0 ... 30	60	700	G5					
	0 ... 4	8	60	0 ... 50	100	850	G6					
	0 ... 6	12	100	0 ... 100	200	1450	G7					
	0 ... 10	20	200	0 ... 150	300	2500	G8					
	0 ... 16	32	200	0 ... 200	400	2500	GA					
	0 ... 25	50	300	0 ... 250	500	2500	G9					
	0 ... 40	80	300	0 ... 300	600	4000	HA					
	0 ... 60	120	400	0 ... 400	800	4000	H0					
	0 ... 100	200	500	0 ... 500	1000	4000	H1					
	0 ... 160	320	750	0 ... 1000	2000	5000	H2					
	0 ... 250	500	1000	0 ... 1500	3000	7000	H3					
	0 ... 400	800	1500	0 ... 2000	4000	10000	H5					
	0 ... 600	1000	2000	0 ... 3000	6000	14500	G4					
				0 ... 5000	10000	21750	H4					
				0 ... 7500	15000	29000	H6					
Sensor	Relative pressure, accuracy: 0.3 %						23					
	Relative pressure, accuracy: 0.15 %						21					
	Relative pressure, accuracy: 0.1 %						24					
	Absolute pressure, accuracy: 0.3 % ⁴⁾						43					
	Absolute pressure, accuracy: 0.15 % ⁴⁾						41					
	Absolute pressure, accuracy: 0.1 % ⁴⁾						44					
Pressure connection	G1/4" male (Seal)						17					
	1/4" NPT male						30					
	1/4" NPT female ⁷⁾						13					
	7/16"-20UNF male ^{3) 4)}						18					
	7/16"-20UNF female, DIN3866 (valve opener) ^{3) 4)}						24					
	7/16"-20UNF male SAE4 (J1926)						42					
	3/8"-24UNF SAE6 male (J514) ⁷⁾						62					
	R1/4" male, DIN2999 ⁷⁾						20					
	M14x1.5 male DIN EN ISO 6149-2 ⁷⁾						31					
Electrical connection	Male electrical plug industrial standard (contact distance 9.4 mm), Mat. PBT						01					
	Male electrical plug M12x1, 4-pole, Mat. PBT						32					
	Male electrical plug M12x1, 5-pole, Mat. PBT						35					
	Male electrical plug MIL-C 26482, 6-pole, metal						02					
	Cable Mat. EPD Raychem FDR25, IP67, 4 x 0.2 mm ² ⁷⁾						08					
Output signal	Signal output	Load resistance	I (supply)	U (supply)								
	4 ... 20 mA	(U _{supply} -9 V) / 20 mA		24 (9 ... 32) VDC			19					
	0 ... 5 VDC	≥ 2.0 kΩ	≤ 10 mA	24 (9 ... 32) VDC			14					
	1 ... 6 VDC	≥ 2.0 kΩ	≤ 10 mA	24 (9 ... 32) VDC			16					
	0 ... 10 VDC	≥ 5.0 kΩ	≤ 10 mA	24 (15 ... 32) VDC			17					
0.5 ... 4.5 VDC	≥ 2.0 kΩ	≤ 10 mA	5 (4.5 ... 5.5) VDC ratiom.			23						

Accessories		
Female electrical plug M12x1, 5-pole, for electrical connections 32 and 35		33
Female electrical connector industrial standard		34
Meets EN 50155 (railways) dielectrical strength: 500 VAC, 50 Hz ⁵⁾		11
Pressure peak damping element ø 1.0 mm ⁶⁾		40
Pressure peak damping element ø 0.3 mm ⁶⁾		43
Pressure peak damping element ø 0.5 mm ⁶⁾		45
Special electrical connection: Pin 1 + , Pin 2 Ground, Pin 3 -, Pin 4 Out (only for output signals 14, 16, 17, 23 and male electrical plug 32, M12x1, 4-pole)		96
Cable length 0.5 m		EM
Cable length 1.0 m		1M
Cable length 2.0 m		2M

¹⁾ Extended overpressure as well as customized pressure ranges upon request

²⁾ Measuring accuracy 0.3 %

³⁾ Relative pressure only

⁴⁾ Max. allowable pressure range 40 bar

⁵⁾ Only with output 19

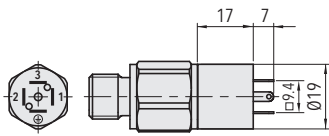
⁶⁾ Only for pressure connections 17 and 30

⁷⁾ Upon request

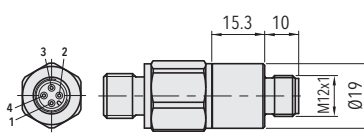


Identical construction with higher/lower specifications: Data sheet No. H72250, H72301

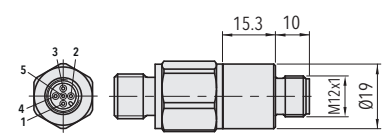
Dimensions



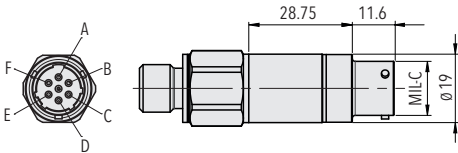
8253.XX.XXXX.01.XX.XX



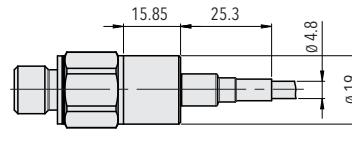
8253.XX.XXXX.32.XX.XX



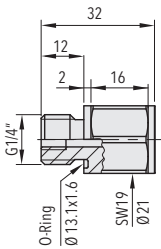
8253.XX.XXXX.35.XX.XX



8253.XX.XXXX.02.XX.XX

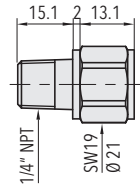


8253.XX.XXXX.08.XX.XX



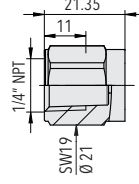
8253.XX.2317.XX.XX.XX

8253.XX.2117.XX.XX.XX



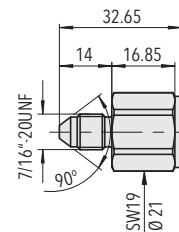
8253.XX.2330.XX.XX.XX

8253.XX.2130.XX.XX.XX



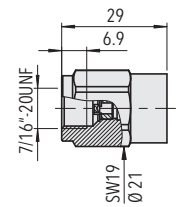
8253.XX.2313.XX.XX.XX

8253.XX.2113.XX.XX.XX



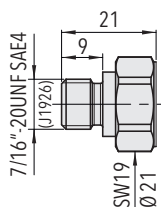
8253.XX.2318.XX.XX.XX

8253.XX.2118.XX.XX.XX

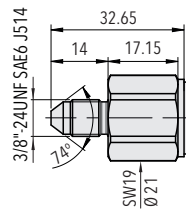


8253.XX.2324.XX.XX.XX

8253.XX.2124.XX.XX.XX

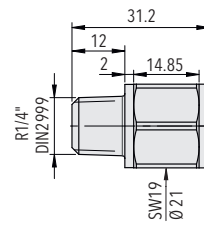


8253.XX.XX42.XX.XX.XX



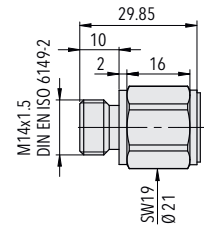
8253.XX.2362.XX.XX.XX

8253.XX.2162.XX.XX.XX



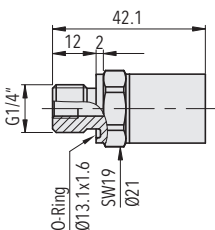
8253.XX.2320.XX.XX.XX

8253.XX.2120.XX.XX.XX



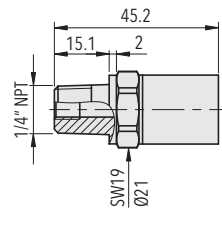
8253.XX.2331.XX.XX.XX

8253.XX.2131.XX.XX.XX



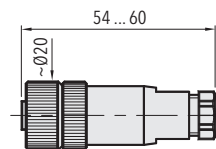
8253.XX.4317.XX.XX.XX

8253.XX.4117.XX.XX.XX

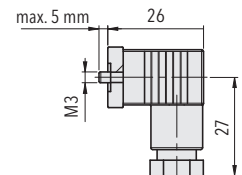


8253.XX.4330.XX.XX.XX

8253.XX.4130.XX.XX.XX



8253.XX.XXXX.XX.XX.33



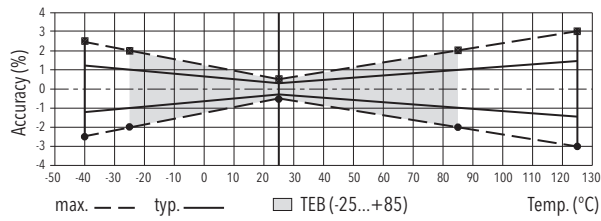
8253.XX.XXXX.XX.XX.34

Specifications		
Electrical Data	Output / supply voltage	4 ... 20 mA: 24 (9 ... 32) VDC 0 ... 5 VDC: 24 (9 ... 32) VDC 1 ... 6 VDC: 24 (9 ... 32) VDC 0 ... 10 VDC: 24 (15 ... 32) VDC 0.5 ... 4.5 VDC: 5 VDC ratiom.
	Rise time	Typ. 1 ms / 10 ... 90 % nominal pressure
	Switch-on-delay	1 s
Environmental conditions	Media temperature	-40°C ... +125°C
	Ambient temperature	-40°C ... +125°C
	Protection ¹⁾	Min. IP65
	Humidity	Max. 95 % relative
	Vibration	40 g (20...2000 Hz)
	Shock	100 g / 11 ms
EMC Protection	Emission	EN/IEC 61000-6-4
	Immunity	EN/IEC 61000-6-2
Mechanical Data	Sensor (wetted parts)	1.4542 (AISI630)
	Pressure connection (wetted parts)	Pressure ranges ≤ 250 bar: 1.4542 (AISI630) Pressure ranges > 250 bar: 1.4301 (AISI304)
	Housing	1.4301 (AISI304)
	Sealing	FKM 70 Sh
	Male electrical plug	See ordering information
	Weight	~ 50 g
	Mounting torque	25 Nm

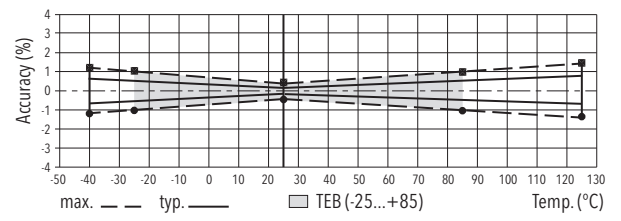
¹⁾ See electrical connection

Accuracy				
		Measuring accuracy 0.3 % Ordering No. 23/43	Measuring accuracy 0.15 % Ordering No. 21/41	Measuring accuracy 0.1 % Ordering No. 24/44
TEB @ -25...+85°C	[% FS typ.]	± 1.0	± 0.5	± 0.4 (0 ... 65°C)
TEB @ -25...+85°C; 0...4 to 0...100 bar	[% FS typ.]	-	-	± 0.4
TEB @ 0...+65°C; 0...4 to 0...100 bar	[% FS typ.]	-	-	± 0.25
Accuracy @ +25°C	[% FS typ.]	± 0.3	± 0.15	± 0.1
NLH @ +25°C (BSL)	[% FS typ.]	± 0.2	± 0.1	± 0.1
TC zero point and span	[% FS/K typ.]	± 0.01	± 0.002	± 0.002
Long term stability 1 year @ +25°C	[% FS typ.]	< ± 0.1	< ± 0.1	< ± 0.1

Measuring accuracy 0.3 %



Measuring accuracy 0.15 %



Electrical connection

		Protection / electrical connection				
		IP65 *)	IP67 *)		IP67 *) (**)	IP67 (**)
		Industrial standard EN175301-803A	M12x1		MIL-C 26482	Cable
		01	4-pole 32	5-pole 35	02	08
Output signal	<p>8253.xx.xxxx.xx.19</p>	2 1 ⊕	1 3 4	4 1 5		red black -
	<p>8253.xx.xxxx.xx.14/16/17/23</p>	1 2 3 ⊕	1 2 3 4	96 1 4 3 2	A C B/D E	red green black -

*) Provided female connector is mounted according to instructions

**) Ventilation via male electric plug/cable end

Additional information

Documents

Data sheet	www.trafag.com/H72300
Instructions	www.trafag.com/H73250
Flyer	www.trafag.com/H70670